



Sound Skulptor REM624 User manual

1. Installation

The **REM624** connects to the **MC624** with a USB-A-USB-A cable.

The signal and protocol are not typical USB compatible. It uses USB connectors but the signal is actually RS485 with 12V supply. So do not try to connect it to a computer!

The RS485 allows longer cables than USB so you will be able to add an extension if you need but it must be a passive cable (without electronics).

On the **MC624** you must use the lower USB socket. It is the only one which is powered.

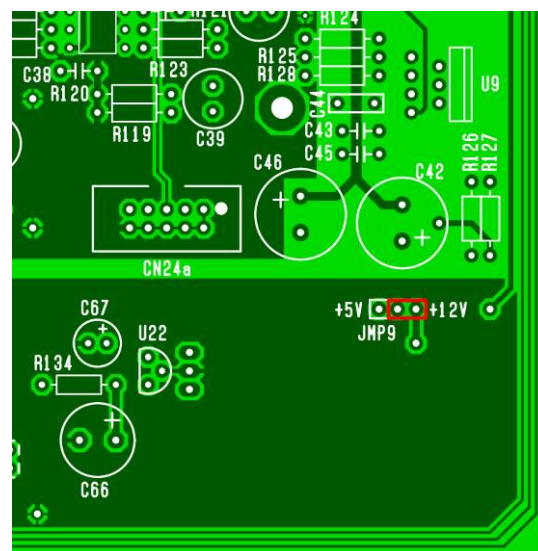
On the **REM624**, only one socket is accessible through the hole in the box. The other socket is not used.

2. Preparing the MC624

The **REM624** is remotely powered by the **MC624**.

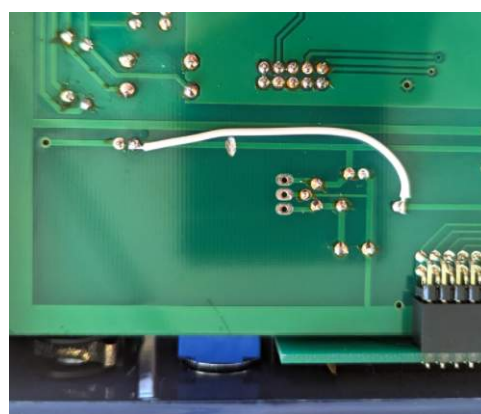
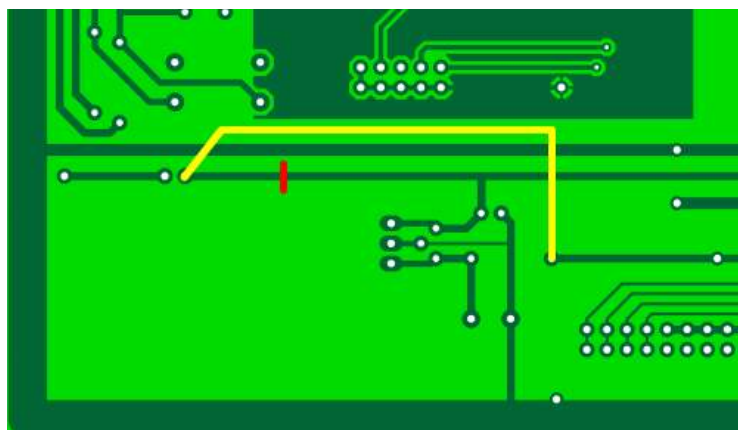
- If your **MC624** PCB is a REV 1.4 revision

You must place a jumper on **JMP9** between the centre pin and +12V.



- If your **MC624** PCB is a REV 1.3 revision

A modification of the **MC624** is needed: You must cut the track that brings the +5V to the jumper **JMP9** (red line) and make a connection to the +12V (yellow line). The jumper must be placed on **JMP9**.



Bottom views



3. Firmware update and setup

If the microcontroller U20 has a version number lower than V1.6, the MONO and DIFF commands will not work so you will need to update the firmware by replacing U20 by an updated version.

The **MC624** must be set in Slave mode:

Press Mute and Dim simultaneously,

Press Mute, Press Mute,

Turn the Level knob to display SLA,

Press an other switch.

The **REM624** must stay in Master mode.

4. Front panel commands

The REM624 controls are exactly the same as the ones on the MC624.

INPUT SELECT Pressing one of the six push switches selects the corresponding input and sends it to the selected output and to the Meter Output. Inputs are mutually exclusive.

OUTPUT SELECT Pressing one of the four push switches sends the selected input to the corresponding output. Outputs are exclusive except output 4 which can be set as a SUB output and activated in addition to one of the first three.

MUTE Turns off the monitor output signal (but not the Meter Output neither the headphone output).

L/R Mutes the left and right channels alternatively. Unmuting is done by pressing the MUTE switch.

MONO Sums the left and right channels and sends the result to both.

DIFF Inverts the phase of the right channel. When **DIFF** and **MONO** are both activated, the output is the difference left-right.

DIM attenuates the output by an amount of dB defined in "Functions Setup" (default: -20dB).

LEVEL Sets the monitoring output level. It is also used to set-up parameters.

5. MC624 Setup

Do not use the REM624 to setup inputs, outputs or system parameters. Do it on the MC624 directly.