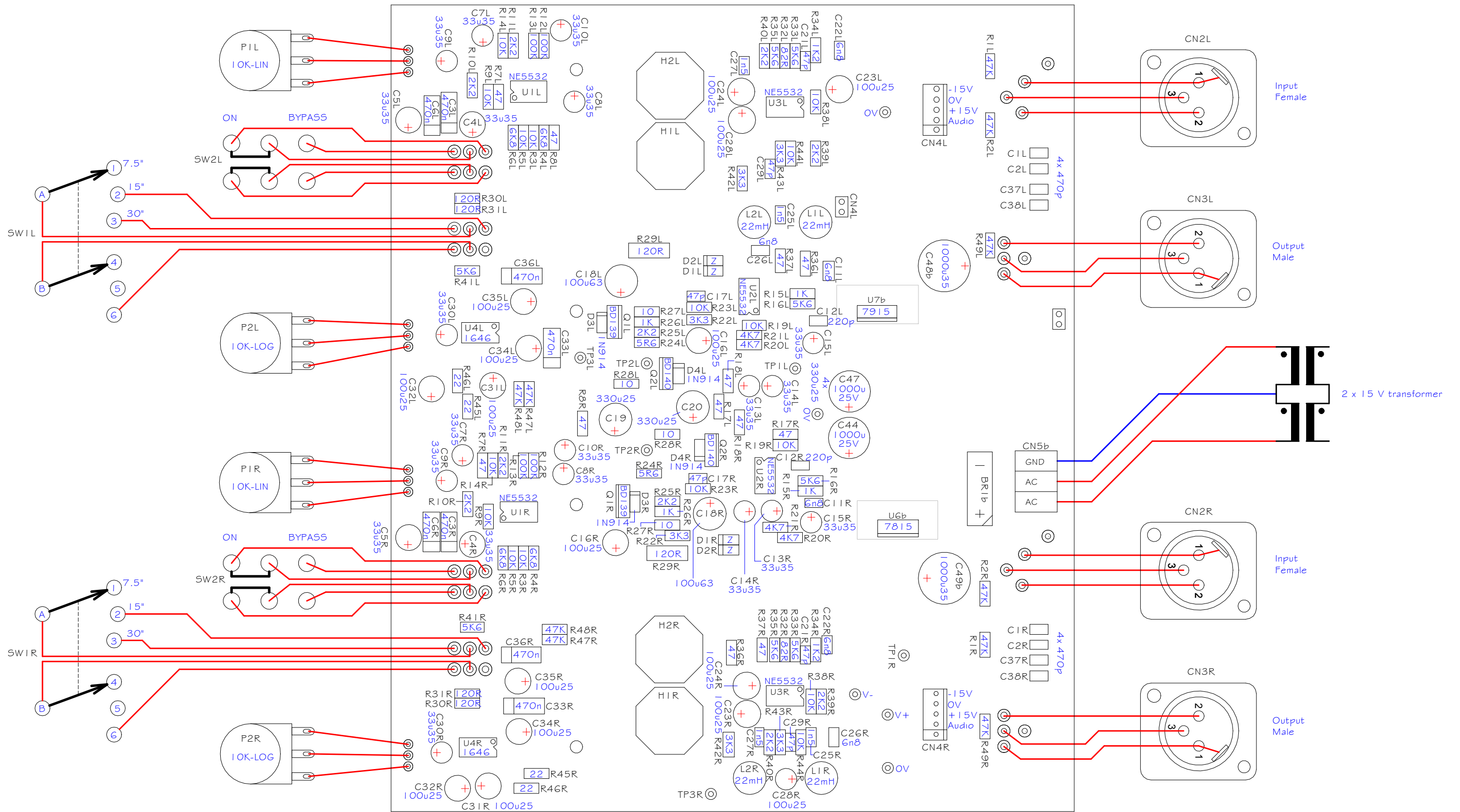


For standard Power supply : install (a) components, do not install (b) components  
 For optional Power supply : install (b) components, do not install (a) components



<b>SOUND SKULPTOR</b>	Title	STS Mini-Kit Component Layout page 1/1	Sch Rev	1.5
	www.soundskulptor.com		PCB Rev	1.4
	Copyright ©2007-2010 Soundskulptor		Last modified	28/02/13